

GPS TRACKER USER MANUAL



PREFACE

Thank you for purchasing GPS tracker. This manual shows how to operate the device smoothly in details, please make sure to read this manual carefully before using the device. Please be noted that any update of the manual is made without prior notice. Each time the update of the manual will be released in the latest product sales. The manufacturer won't assume any legal responsibility for any errors or omissions made in this manual.

1 SUMMARY

Working based on existing GSM/GPRS network and GPS satellites, this product can locate and monitor any remote targets by SMS, APP and Internet. It adopts the most advanced technology of GPS and AGPS dual positioning.

Specifications

| Content | Specs. |
|-------------------|--|
| Dim. | 50*45*20mm |
| Weight | 40g |
| Network | GSM/GPRS |
| Band | 850/900/1800/1900Mhz |
| GPS sensitivity | -159dBm |
| GPS accuracy | 10m |
| Work voltage | 12V-36v |
| Time To First Fix | Cold status 45s-150s Warm status 35s Hot status 1s |
| Storage Temp. | -40°C to +85°C |
| Operation Temp. | -20°C to +55°C |
| Humidity | 5%--95% non-condensing |

2.Operational

Notices:

1).GPS tracking can be worked outdoor. Must have mobile phone gsm signal and have GPS signal, It can block GPS satellite signal when there are metal or building above the GPS tracker

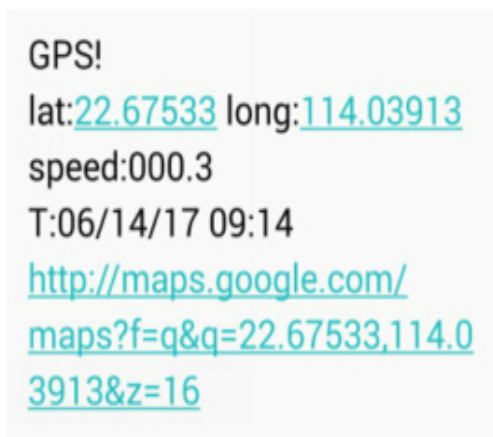
2).Pls make sure GSM 2g SIM card or compatibility 2G GSM network sim card, supports making calls, sending messages, GPRS network.have money,Cancel the PIN code



2.1.Quick using

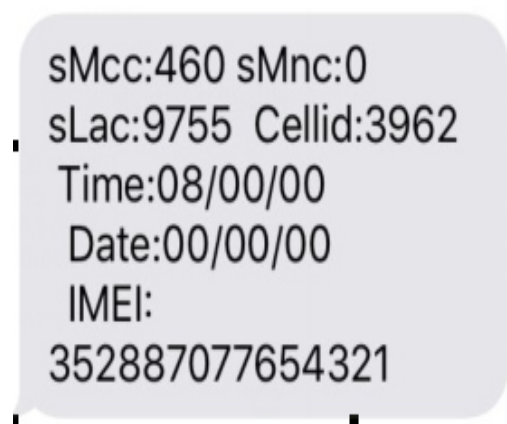
- 1) insert the SIM card to in gps tracker
- 2) tracker Insert in the Car OBD interface, drive car to the outdoor
- 3) send“[smslink123456](#)” to sim card in tracker ,tracker reply positioning information

EXPLANATION OF PARAMETERS/CODES IN SMS MESSAGE



GPS!
lat:[22.67533](#) long:[114.03913](#)
speed:000.3
T:06/14/17 09:14
[http://maps.google.com/
maps?f=q&q=22.67533,114.0
3913&z=16](http://maps.google.com/maps?f=q&q=22.67533,114.03913&z=16)

Pic (1) have gps signal



sMcc:460 sMnc:0
sLac:9755 Cellid:3962
Time:08/00/00
Date:00/00/00
IMEI:
352887077654321

Pic(2)no gps signal

Pic 1: Replied real-time tracking information under GPS satellites signal.

- ◆ **Lat:22.67533 lon:114.03913** Positioning of the latitude and longitude values.
 - ◆ **Spd: 000.3** This refers to the device moving speed. The unit is km/h.
 - ◆ **T:06/14/17 09:14** real-tracking time, the Default is London time. You can set a time zone by sms command
- Google Link:** This is the link to the Google map showing the position of the device.

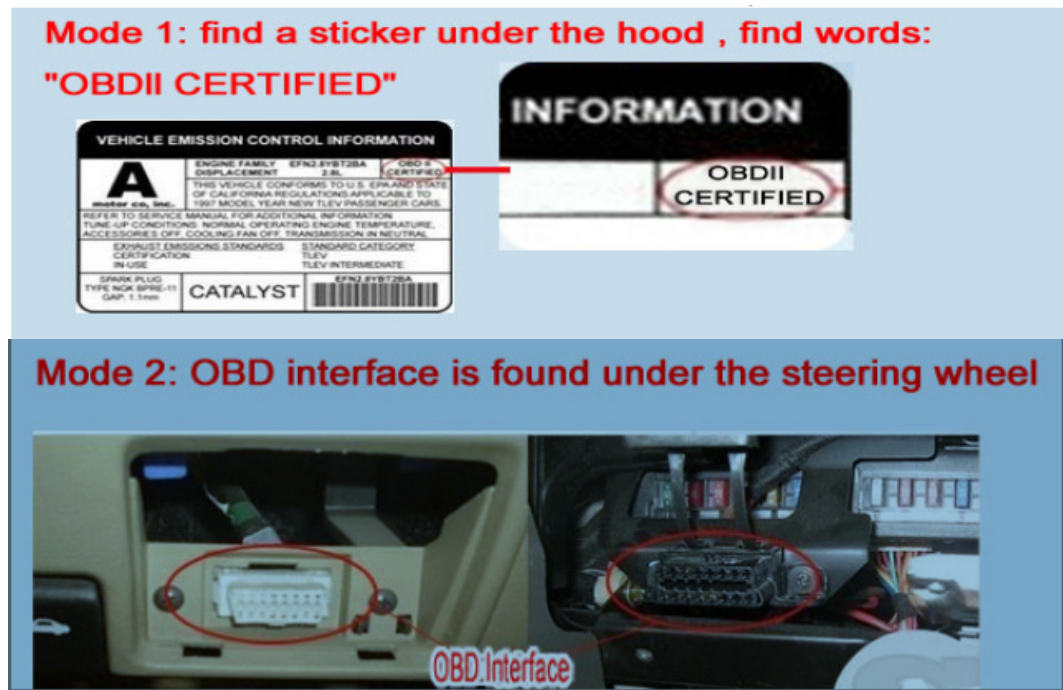
Pic 2: Replied LBS information without GPS satellites signal.

- ◆ **smcc:27a4 1223:** Real-time LBS data.
- ◆ **Time:08/00/00** LBS positioning time.

If you received positioning information as picture 2, please take gps tracker go to outdoor and Walking ,then you can receive the satellite signal.

2.2 Insert in the Car OBD interface

connect the device to the car obd interface ,as shown below



| INDICATOR LIGHT STATUS | MEANING |
|---------------------------|--------------------------------|
| green light -Solid | GSM signal connection |
| green light -Flash | NO GSM or searching gsm signal |
| blue light -Solid | GPS signal connection |
| blue light –quickly Flash | Searching gps signal |

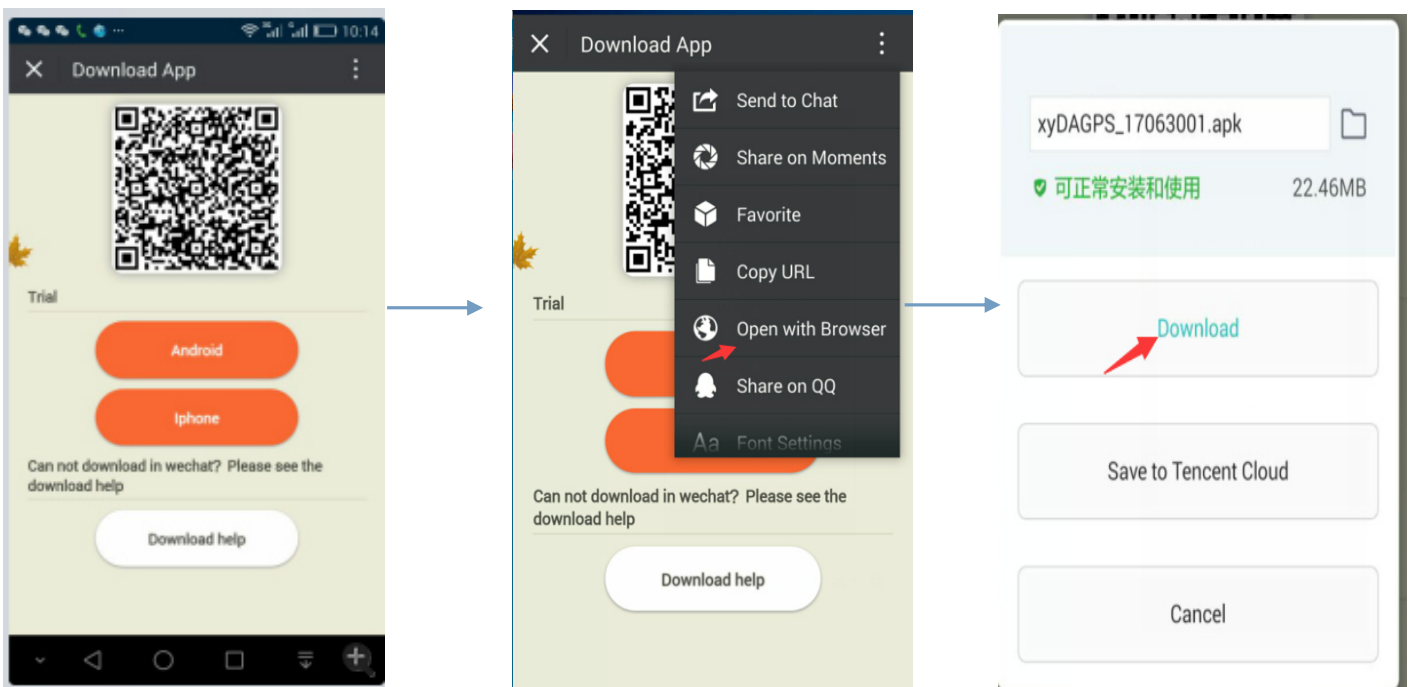
Note: All led will turn off after 10 minutes for best hide.if you call the device mobile number,so the led will turn on work again.

Connect 12V-36 v voltage of the power supply

3:Support Website tracking and APP tracking

3.1 Scan APP and Download APP

1)scan QR code---open with browser--- choose Android or IPHONE---download-- installation app



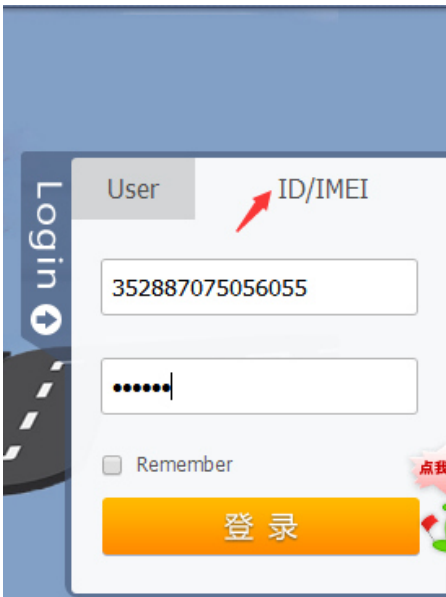
2) Download iOS APP:login in app store---dagps---Install the dagps APP

3.2: login platform positioning

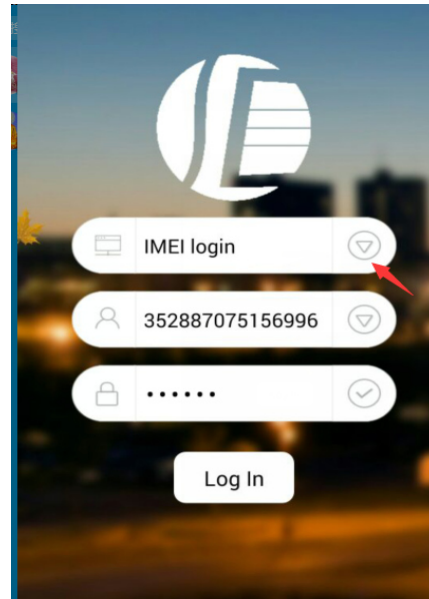
1)Open www.gps110.org

Use tracker IMEI login, default password 123456.

You can tracker device,it is ok



PC login



APP login

NOTE:If you insert the correct SIM card and open GPRS, device in outdoor, still not online.Please set the APN [commands](#)

[we have two methods to find out apn content:ask simcard company or put sim card into cell phone to find out APN](#)

SMS1: [APN123456+space+Apn name](#) (for example tell you the apn name is ABC,so send [APN123456 ABC](#))

If have the APN user name and password, need plus APN user name and password behind the APN name)

Eg:[APN123456+space+APNname+space+APNuser name+space+ APNpassword](#)

If want use other platform ,pls set new ip and port.

SMS1: [admin123456+space+IP+space+port](#)

Eg: [Admin123456 103.110.152.62 7018](#)

4. SMS Command instruction

NOTE:

1) Device default password:123456

2)use of mobile phone APP or send message to the tracker about all set command,note the space in the command

3)The default mode is “GPRS”, Send SMS: [sms123456](#) to the tracker, It will close GPRS.open GPRS mode,Send SMS [gprs123456](#)

4)the default alarm way is SMS+platform,Send command “[way123456 2](#)”
alarm to SMS+platform+call

| INSTRUCTION | Example | REPLY |
|---|--|---------------|
| Set admin number support 5pcs admin | admin123456 mobile number admin number receive alarm message | admin ok |
| Cancel admin number | noadmin123456 mobile number | noadmin ok |
| Set time zone | time zone123456 1 (1 is east 1, -1 is west 1) | Time zone ok |
| Set time zone(half time zone) | Time zone123456 8 30 (8 30 is east 8.5 time zone) | time zone ok |
| Vibration alarm | Shock123456 | Shock ok |
| Cancel vibration alarm | Noshock123456 | Noshock ok |
| Intelligent mode saving Power and GPRS | Sleepin123456 upload positioning when vehicle move and not upload positioning when vehicle stops | Sleepin ok |
| Cancel Intelligent mode | Sleepout123456 | Sleepout ok |
| Parameter | Check123456 | Device status |
| real-time tracking (default 10s) | fix030s***n123456 every30seconds/1times positioning Can change time interval | T n ok |

5. FAQ and processing methods.

| FAQ | Instructions/Solutions |
|--|--|
| Fail to turn it on | Insert card turn on, and connected 12- 36 v power supply from OBD interface |
| No GSM signal | <p>Please check if SIM card installed correctly and have money, if there a mobile phone GSM signal</p> <ul style="list-style-type: none"> ● Please check if SIM card is 2G or Compatible 2G GSM network. And have to mobile phone signal |
| No GPS | A more open view of the sky is recommended to make sure the device can receive the GPS signal normally. in outdoor and take device to walk around |
| No reply to SMS command | Password wrong or the format is wrong. restore factory settings send messages “ begin123456 ” |
| No reply to calling & No | Authorized / admin phone number is incorrect or has not set up |
| SMS position OK, cannot the APP and web | Pls check if APN is correctly set. And set the correct APN |
| Platform position is difference and the actual position. | position time don't update or no GPS signal: call the device phone number and receive the position message. If it shows like Pic 2, pls make sure the device can receive the GPS signal normally. in outdoor, and take device to walk around, make sure sim normal |

