

Models: 4 / 8 CH

Wireless kit

Quick installation guide



Hardware description

1 Statement

Sincerely thanks for purchasing our products,pls contact us if any problem or requirement.

This manual is network video recorder.

This user manual may contain incorrect place in technology,place not matching with product Function or operation, or printing mistake.

We will update our user manual according to our updating in product,and will periodically Improve or updating the product and programming.the updating content will add in the new User manual,we won't inform.

If the product's description in user manual is inconsistent with the real products,pls based on

The real products.

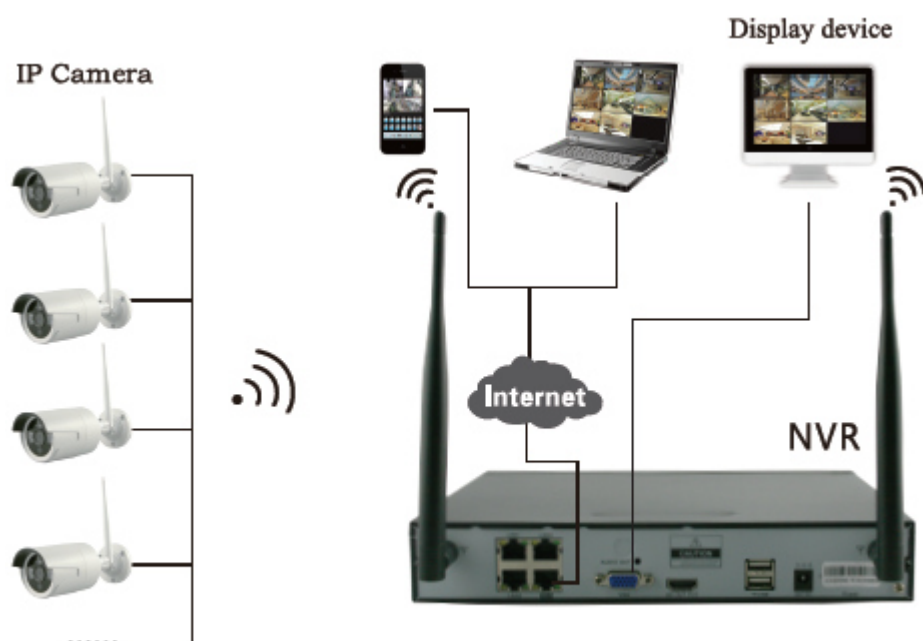
2 Safety cautions

- 1.Pls don't put a container with liquid on DVR (like Vase).
- 2.DVR should put at a ventilation place,and prevent clogged the ventilation hole.
- 3.Check the power voltage,in case if damage by wrong voltage.
- 4.DVR should work at the technical standard range of temperature and humidity.
- 5.Place DVR on level,pls avoid installing at a sharp pounding place.
- 6.Moisture dust in PCB will cause short,circuit,for long-term use of the DVR,you can Periodically remove dust in PCB by brush.
- 7.It will cause burst if replace battery in wrong way,we don't suggest user to replace by Himself,if need replace,only use the same type or equivalent type battery,pls don't try to Open or maintain the battery.
- 8.DVR installation need according to specification,you can take the national or local standard
As reference.

3 Open-package inspection

After receive product,pls open giftbox,remove NVR and put it on suitable place,check accessories.If any damage or lack,kindly pls contact to the distributor

4 Installation diagram



5 Antenna location



Correct method



fault method

The signal coverage of Antenna is similar to a round circle. Antenna located in center of the

round circle, signal of surrounding is much stronger, but much weaker if antenna endpoints backoff direction. according to the signal divergency characteristics of antenna, and in order to guarantee the video quality, IPC antenna should try to keep in parallel or tangent with NVR antenna.

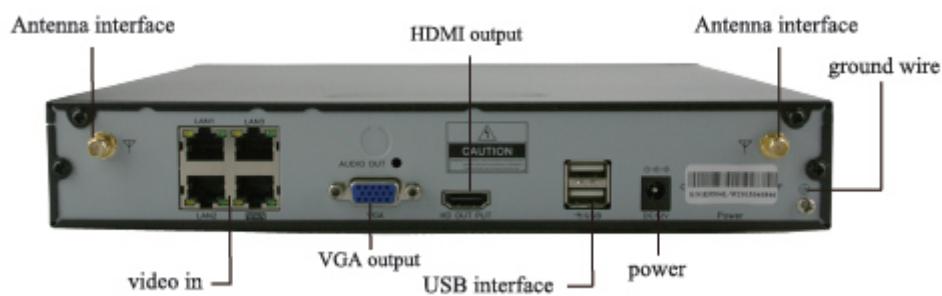
6 HD Install

Notice that the HDD had been used need supplier recommend, and need make suer already cut off the power.

Install Steps:

1. Remove the screw of the dvr
2. Connect the HDD cable and power line
3. Assmble the screw, and fix the HDD in the bottom of NVR
4. Close the cover and fix it

7 Rear Panel Description



8 Turn on/off

Confirm that AC voltage accessible matches with DVR. Ensure that the DVR power outlet connect with a good middle ground grounding. After switching power, the device started, **【POWER】** light is on. Turn into system, if the panel status light flashing, it's normal conditions.

9 NVR,IPC parameter list

NVR parameter			
Operating System	Embedded linux OS		
AV(audio/video)input	Network Video	4CH	8CH
	Network Video input broadband	20Mbps	
AV(audio/video) output	HDMI input	1ch, resolution: 1024x768, 1336x768, 1440x900,1920x1080P	
	VGA output	1ch, resolution: 1024x768, 1336x768, 1440x900,1920x1080P	
AV CODEC	Video Resolution	DI/720P/960P	
Specification	synch-playback	4CH	8CH
Video Control	Video/Capture mode	Manual、Time、Motion、Alarm	
	Playback mode	Real time 、Routine、Event	
	Backup	USB backup	
HDD	Type	1*SATA interface	
	Max Capacity	4 TB at most for each	
External Interface	Network Interface	1 adaptable RJ45 10M/100M, 2 WIFI interface	
	USB Interface	2 USB 2.0	
Network Control	Protocol	UPnP (play&plug)、SMTP (email service)、 PPPoE (dial-up)、DHCP (Automatically Obtain an Ip address),etc...	
Others	Power	DC 12V 3A	
	Consumption(excluding HDD)	≥ 5W	
	Working Temperature	-10℃—55℃	
	Working Humidity	10%—90%	
	Size	257x210x45mm	
	Weight(excluding HDD)	≤1Kg	

IPC Specification

Operating System	Embedded linux
Image Sensor	1/4" Progressive Scan Sensor
S/N Ratio	>39.1dB
Resolution	1280x720 16:9 High Definition
Minimum Illumination	Color:0.1 Lux B/W:0.01 Lux
Lens	4mm
OSD	Date Time&Title
White Balance	Auto
Day&Night	Auto/Color/BW
3D-DNR	Auto
Mirror/Flip	On/Off
Privacy Masking	4 Zone Selectable
Frame Specification	Three Streaming at the Same Time: H.264 128x720@30fps or below H.264 640x480@30fps or below
Anti-thunder Level	Standard IEC6100-4-5
Power Input	DC12V-1A
Consumption	≤6W
Interface	RJ45/WIFI 802.11b/g/n
Working Temperature/Humidity	-10℃ to +50℃/30% to 80% RH
Storage Temperature/Humidity	-20℃ to +60℃/20% to 90% RH
Size	205(L)x70(W)x50(H)mm
Weight	500g

Software operation

1 add camera by matching code

Steps: right click the blank of main interface -> click "System Setup" System Setup->"Channel Setup"->"Channel Setup".Click "quick adding", then Pop up "video manage"

Two ways for Wireless NVR to add IPC "Code Add" and "Auto Add".

Adding camera by matching code, the camera transmits video images through wireless and NVR, IP is 17.20.14.X;

Auto adding the camera ,the camera transmits video images through the cable and NVR,IP is 172.25.123.X;

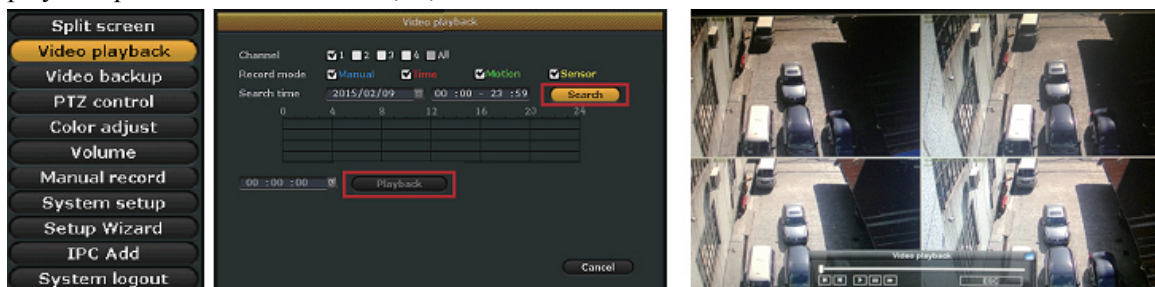
Note:the camera has been matched by factory,no need to add other cameras.If you need to match one code.Firstly,take one network cable and connect any NVR lan port and power on the device to make sure there is still have any channel can add one camera.



2 Video playback

Step: Right click mouse in main menu —Video playback —choose channel NO.—choose record mode —in Search time,input beginning time and end time —click search,recording will come out ,drag time bar —click playback to start

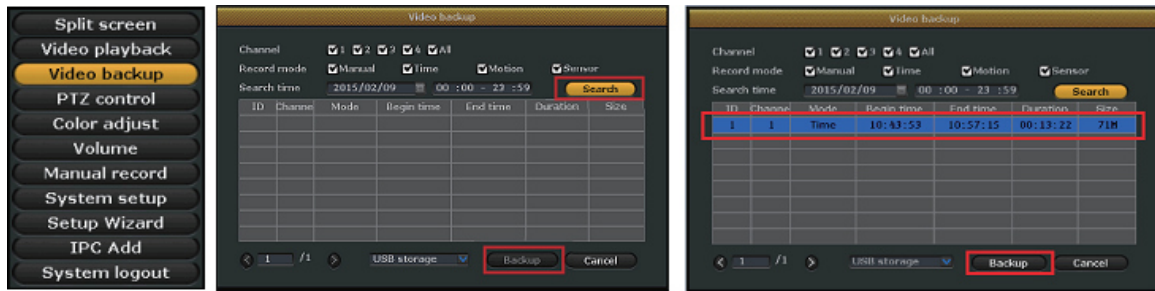
Tips: Playback icon introduction: ◀ playback 1 fram previous ▶ playback 1 frame next ▶ play || puse ⏏ fast forward x2,x4,x8



3 Video backup

Step: Right click mouse in main menu —Video backup —choose channel No.—choose record mode —in Search time ,input beginning time and end time —click search,recording will come out —choose the video which need to backup —click video backup

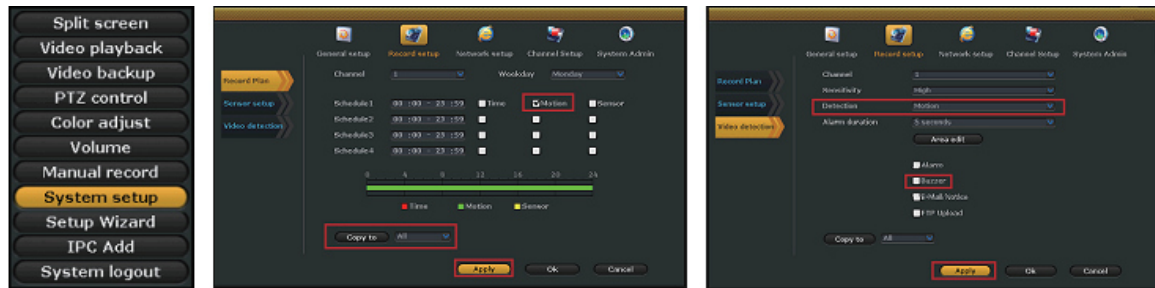
Tips: Support 32G U disk backup max ,recording will be packed every one hour



4 Video detection

Step 1:Right click mouse in mian menu →System setup →Record setup →choose motion→choose all →click Copy to →click OK to save setting.

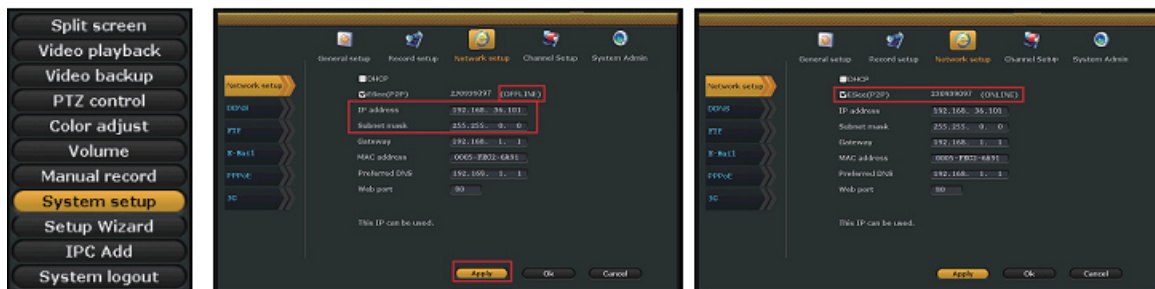
Step 2:Choose Video detection →set sensitivity as requirsd→choose motion→set Alarm,Bizzar or Email as required→click Copuy to→click OK to save setting .



5 Generate Esee ID

Precindition to generate Esee ID is that make sure video recorder is connected with network,and IP address is available Right click mouse in main menu —System setup—Network setup

If user is familiar with LAN,then no need to choose DHCP which help to get IP address automa—tically .Manually input IP address and DNS address,video recorder will generate ID by network,once generate,it will appear in menu



If user not familiar with LAN,or video recorder is in independent network,can choose DHCP to get availableIP address

After video recorder get IP address ,it will generate Esee ID automatically



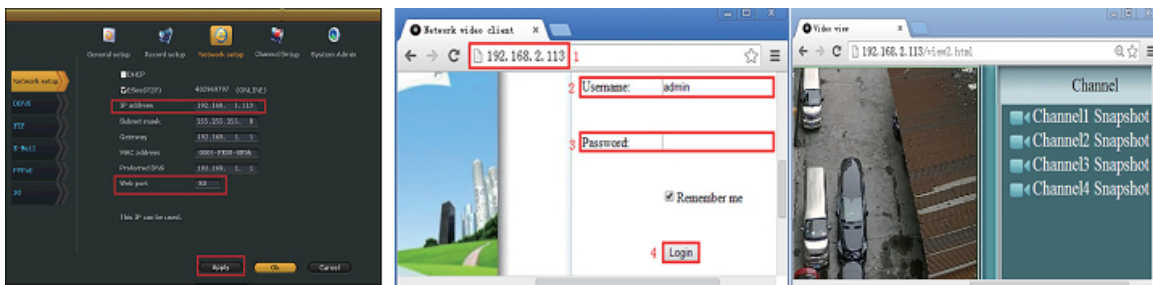
6 Access in LAN

Step 1: Right click mouse in main menu — System setup —Network setup —check video recorder IP address

Step 2: Access by computer in same LAN ,input video recorder IP address and port(If port is 80, no need to input)in IE prower or any other browser.Then it will access LAN log in webpage,input user name and password,click log in

Step 3: Once access successfully,can get video

Tips: Please make sure video recorder and computer in same network segment

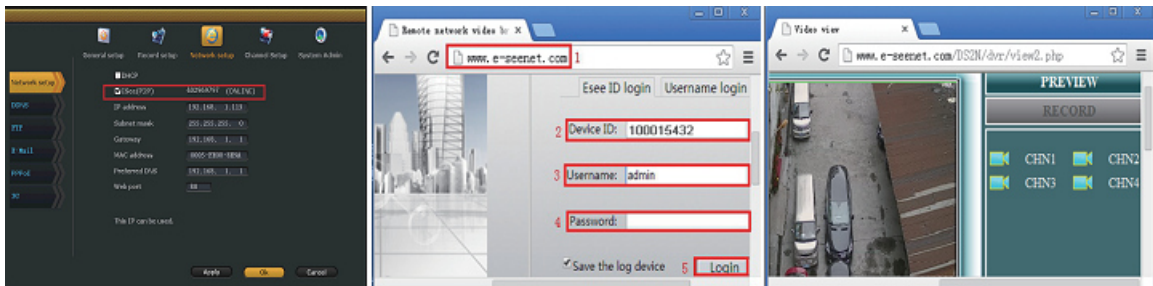


7 Access in WAN

Step 1: Right click mouse in main menu—System setup—Network setup —check video recorder IP address

Step 2: Access by computer in WAN,input www.e-seenet.com in IE browser or any other browser.Then it will access log in webpage ,input ID,user name and password,click log in

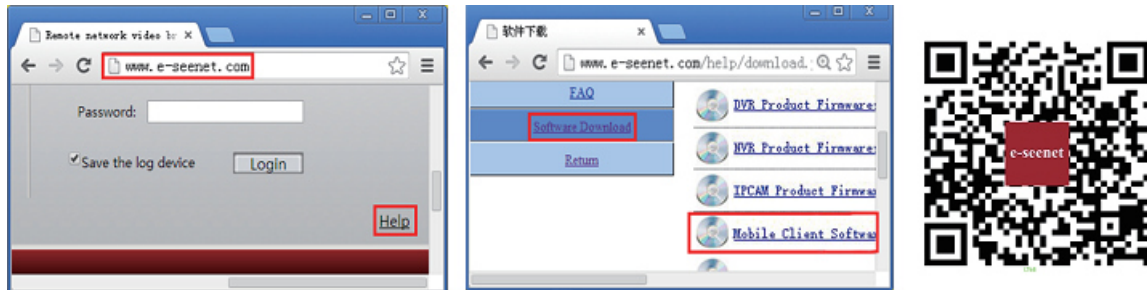
Step 3: Once access successfully,can get video recorder side upload and computer side download speed,each channel need above 20KB



8 Android mobile application download and installation

No.1: Go to www.e-seenet.com in computer,click help —software download —find Android mobile application,click download to save in computer —copy to mobile to install

No.2: Scan two-dimension code by mobile directly ,enter download page,click download to mobile .If mobile.If mobile do not support two-dimension scan,can input www.e-seenet.com/help/download.php in mobile browser,enter download page,click download to mobile



9 Iphone application download and installation

Step 1: Go to APP store

Step 2: Search Eseenet

Step 3: Input APP ID passworld

Step 4: Click download



10 Esee mobile application (Eseenet)-Add device

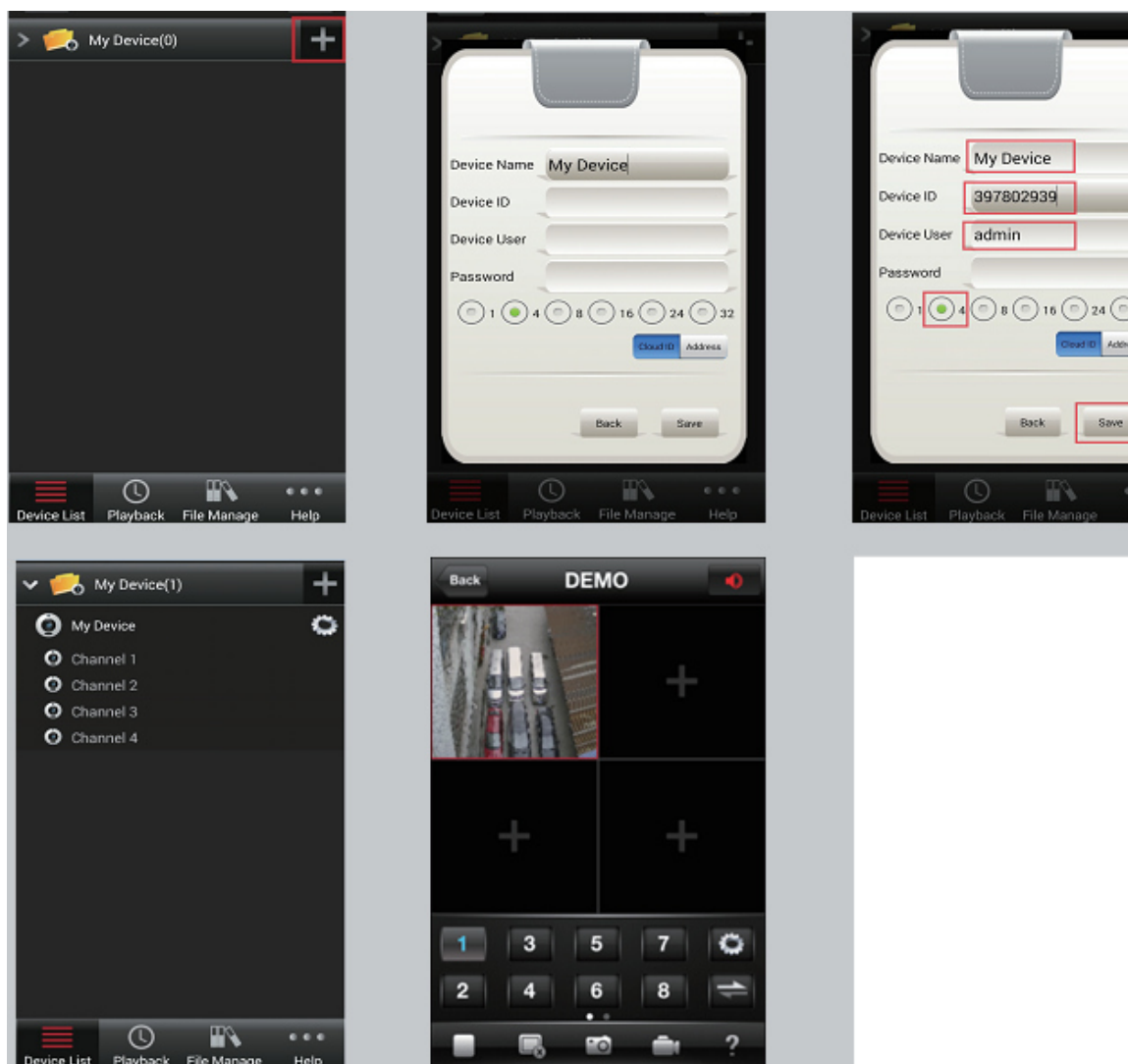
Step 1: Log in Eseenet application,Click “+”icon

Step 2: Enter device edit page

Step 3: Input video recorder log in information

Step 4: Added successfully .it will show below page

Step 5: Click channel No.to get video



11 Esee mobile application (Eseenet)—function

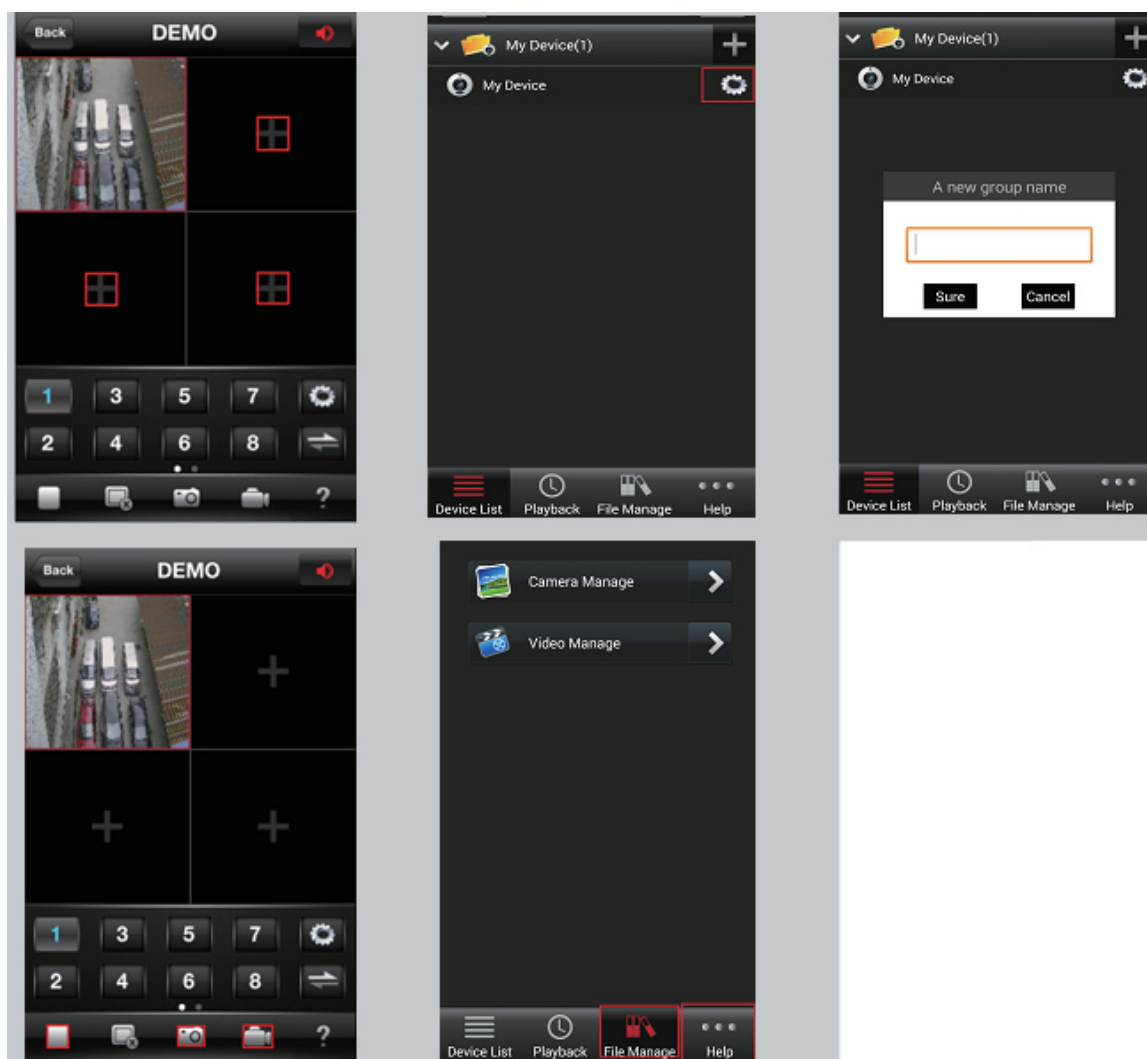
Step 1: It will connect channel 1 video by default,click “+”to add more channel

Step 2: Click this icon to edit video recor log in in formation

Step 3: Add device group

Step 4: Play/Pause Snapshot/Rerord

Step 5: File management and more settings



Packing list

S/N	Item	Quantity
1	NVR	1pcs
2	Screw bag (4 screws for HDD)	1pcs
3	USB mouse	1pcs
4	1 meter network cable (for IPC code match)	1pcs
5	DC 12V3A power supply (for NVR)	1pcs
6	NVR user manual 、 Installation Instructor	1pcs
7	PE4010-W IP Camera	4/8 pcs
8	DC 12V2A power supply (for IPC)	4/8 pcs
9	Screw bag (for IPC)	4/8 pcs

Notes:

1. Device will not in guarantee if caused by below reason:

- A.Accident;negligence;disaster;mis-operation.
- B. Do not conform to the environment and conditions,such as power improper, working temperature too hight or too low, lightning stroke.ect.
- C.Ever be maintained by other center which not belong to the real factory.
- D.Goods already sold more than 12 months.



APP download
scan here

